

# PRINCE GEORGES COUNTY

## Residential Market Report



# HOUSING REPORT

## Single Family Homes

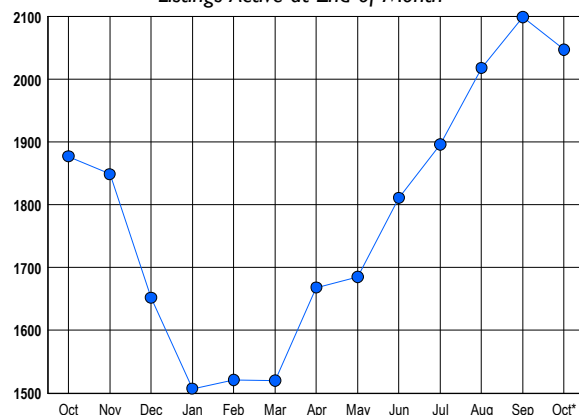
### October 2018

### LISTINGS

Prices Range	New This Month			Total Actives		
	2018	2017	% Change	2018	2017	% Change
0 - 149,999	26	30	-13.3	25	49	-49.0
150,000 - 199,999	53	86	-38.4	101	104	-2.9
200,000 - 299,999	415	412	0.7	618	587	5.3
300,000 - 399,999	428	321	33.3	694	551	26.0
400,000 - 499,999	179	153	17.0	336	295	13.9
500,000 - 599,999	56	45	24.4	154	155	-0.6
600,000 - 699,999	20	36	-44.4	59	80	-26.3
700,000 - 799,999	5	6	-16.7	30	27	11.1
800,000 - 899,999	3	1	200.0	16	12	33.3
900,000 - 999,999	1	0	100.0	5	9	-44.4
1,000,000 - 1,249,999	0	0	0.0	1	2	-50.0
1,250,000 - 1,499,999	1	0	100.0	2	2	0.0
1,500,000 +	0	0	0.0	6	4	50.0
<b>TOTALS</b>	<b>1187</b>	<b>1090</b>	<b>8.9</b>	<b>2047</b>	<b>1877</b>	<b>9.1</b>

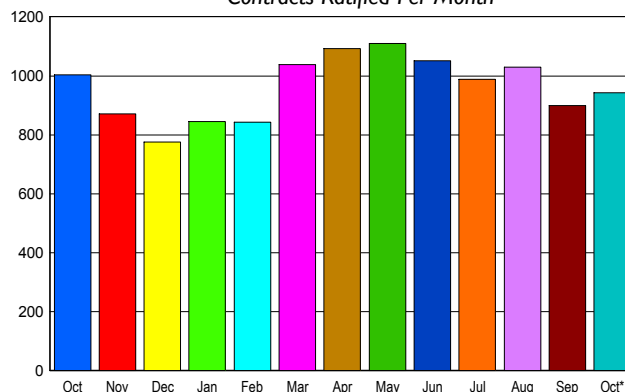
### INVENTORY TREND

Listsings Active at End of Month



### SALES TREND

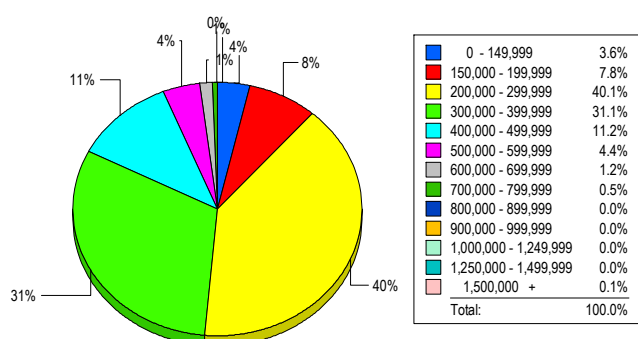
Contracts Ratified Per Month



### CONTRACTS

Price Range	New This Month			Year-To-Date		
	2018	2017	% Change	2018	2017	% Change
0 - 149,999	33	49	-32.7	305	467	-34.7
150,000 - 199,999	79	108	-26.9	731	871	-16.1
200,000 - 299,999	383	407	-5.9	3,358	3,374	-0.5
300,000 - 399,999	286	269	6.3	2,713	2,474	9.7
400,000 - 499,999	112	121	-7.4	1,090	962	13.3
500,000 - 599,999	30	29	3.4	343	293	17.1
600,000 - 699,999	17	14	21.4	125	107	16.8
700,000 - 799,999	1	4	-75.0	28	21	33.3
800,000 - 899,999	1	2	-50.0	7	9	-22.2
900,000 - 999,999	0	0	0.0	7	7	0.0
1,000,000 - 1,249,999	0	0	0.0	0	2	-100.0
1,250,000 - 1,499,999	0	0	0.0	0	1	-100.0
1,500,000 +	0	0	0.0	1	1	0.0
<b>TOTALS</b>	<b>942</b>	<b>1003</b>	<b>-6.1</b>	<b>8708</b>	<b>8589</b>	<b>1.4</b>

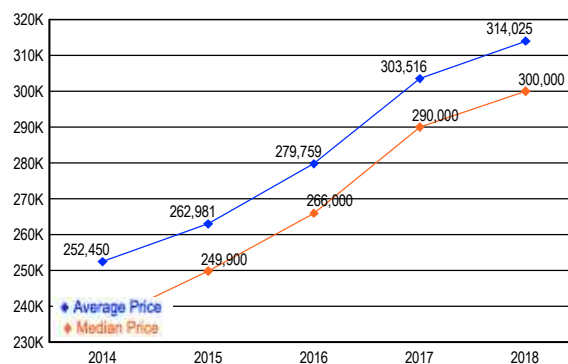
### MARKET BY PRICE RANGE



### SETTLEMENTS

Price Range	New This Month			Year-to-Date		
	2018	2017	% Change	2018	2017	% Change
0 - 149,999	28	37	-24.3	277	412	-32.8
150,000 - 199,999	60	66	-9.1	605	786	-23.0
200,000 - 299,999	309	285	8.4	3,064	3,183	-3.7
300,000 - 399,999	240	252	-4.8	2,553	2,372	7.6
400,000 - 499,999	86	90	-4.4	975	910	7.1
500,000 - 599,999	34	30	13.3	308	275	12.0
600,000 - 699,999	9	8	12.5	138	102	35.3
700,000 - 799,999	4	1	300.0	33	17	94.1
800,000 - 899,999	0	0	0.0	6	6	0.0
900,000 - 999,999	0	0	0.0	5	7	-28.6
1,000,000 - 1,249,999	0	1	-100.0	0	2	-100.0
1,250,000 - 1,499,999	0	0	0.0	0	1	-100.0
1,500,000 +	1	0	100.0	1	1	0.0
<b>TOTALS</b>	<b>771</b>	<b>770</b>	<b>0.1</b>	<b>7965</b>	<b>8074</b>	<b>-1.4</b>

### AVERAGE & MEDIAN PRICE



DATA SOURCE: Metropolitan Regional Information Systems, Inc. (MRIS)

NOTES: Properties not listed through this Multiple Listing Service are not reflected. The term "sales" represents ratified purchase contracts. Current year information is preliminary and subject to revision. Current year- to- date contract information may not equal the sum of the monthly contract totals reported in