

PRINCE GEORGES COUNTY

Residential Market Report



HOUSING REPORT

Single Family Homes

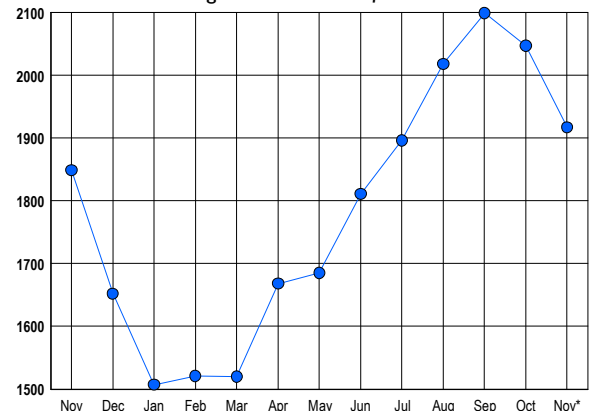
November 2018

LISTINGS

Prices Range	New This Month			Total Actives		
	2018	2017	% Change	2018	2017	% Change
0 - 149,999	24	40	-40.0	26	56	-53.6
150,000 - 199,999	61	93	-34.4	88	124	-29.0
200,000 - 299,999	307	360	-14.7	588	581	1.2
300,000 - 399,999	374	273	37.0	644	511	26.0
400,000 - 499,999	127	126	0.8	314	298	5.4
500,000 - 599,999	62	60	3.3	149	149	0.0
600,000 - 699,999	28	15	86.7	56	70	-20.0
700,000 - 799,999	5	9	-44.4	26	30	-13.3
800,000 - 899,999	3	2	50.0	12	13	-7.7
900,000 - 999,999	1	0	100.0	5	8	-37.5
1,000,000 - 1,249,999	1	0	100.0	3	2	50.0
1,250,000 - 1,499,999	0	1	-100.0	0	2	-100.0
1,500,000 +	0	1	-100.0	6	5	20.0
TOTALS	993	980	1.3	1917	1849	3.7

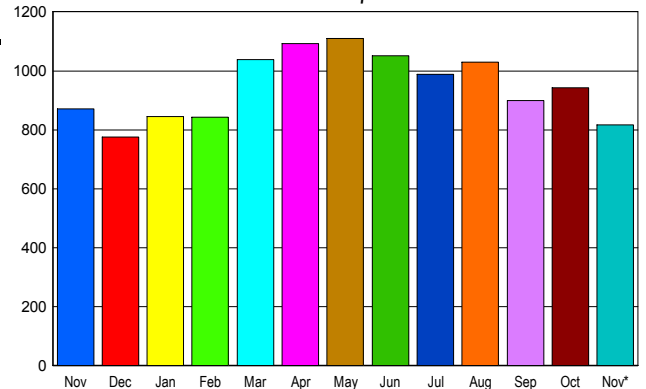
INVENTORY TREND

Listsings Active at End of Month



SALES TREND

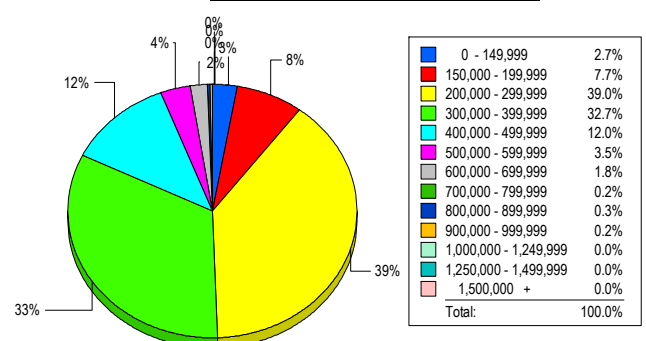
Contracts Ratified Per Month



CONTRACTS

Price Range	New This Month			Year-To-Date		
	2018	2017	% Change	2018	2017	% Change
0 - 149,999	29	36	-19.4	334	486	-31.3
150,000 - 199,999	66	100	-34.0	797	949	-16.0
200,000 - 299,999	303	359	-15.6	3,661	3,666	-0.1
300,000 - 399,999	275	241	14.1	2,988	2,680	11.5
400,000 - 499,999	93	81	14.8	1,183	1,032	14.6
500,000 - 599,999	36	39	-7.7	379	328	15.5
600,000 - 699,999	8	9	-11.1	133	115	15.7
700,000 - 799,999	5	4	25.0	33	26	26.9
800,000 - 899,999	0	0	0.0	7	9	-22.2
900,000 - 999,999	0	1	-100.0	7	7	0.0
1,000,000 - 1,249,999	0	0	0.0	0	2	-100.0
1,250,000 - 1,499,999	1	0	100.0	1	1	0.0
1,500,000 +	0	0	0.0	1	1	0.0
TOTALS	816	870	-6.2	9524	9302	2.4

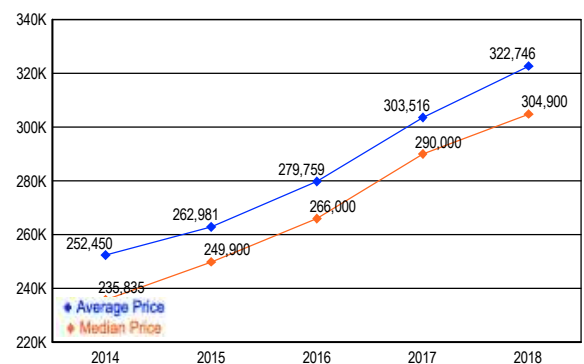
MARKET BY PRICE RANGE



SETTLEMENTS

Price Range	New This Month			Year-to-Date		
	2018	2017	% Change	2018	2017	% Change
0 - 149,999	17	31	-45.2	294	447	-34.2
150,000 - 199,999	48	81	-40.7	653	873	-25.2
200,000 - 299,999	244	304	-19.7	3,308	3,501	-5.5
300,000 - 399,999	205	196	4.6	2,708	2,588	4.6
400,000 - 499,999	75	90	-16.7	1,050	1,019	3.0
500,000 - 599,999	22	26	-15.4	330	306	7.8
600,000 - 699,999	11	10	10.0	149	112	33.0
700,000 - 799,999	1	3	-66.7	34	21	61.9
800,000 - 899,999	2	1	100.0	8	7	14.3
900,000 - 999,999	1	0	100.0	6	7	-14.3
1,000,000 - 1,249,999	0	0	0.0	0	2	-100.0
1,250,000 - 1,499,999	0	0	0.0	0	1	-100.0
1,500,000 +	0	0	0.0	1	1	0.0
TOTALS	626	742	-15.6	8541	8885	-3.9

AVERAGE & MEDIAN PRICE



DATA SOURCE: Metropolitan Regional Information Systems, Inc. (MRIS)

NOTES: Properties not listed through this Multiple Listing Service are not reflected. The term "sales" represents ratified purchase contracts. Current year information is preliminary and subject to revision. Current year- to- date contract information may not equal the sum of the monthly contract totals reported in